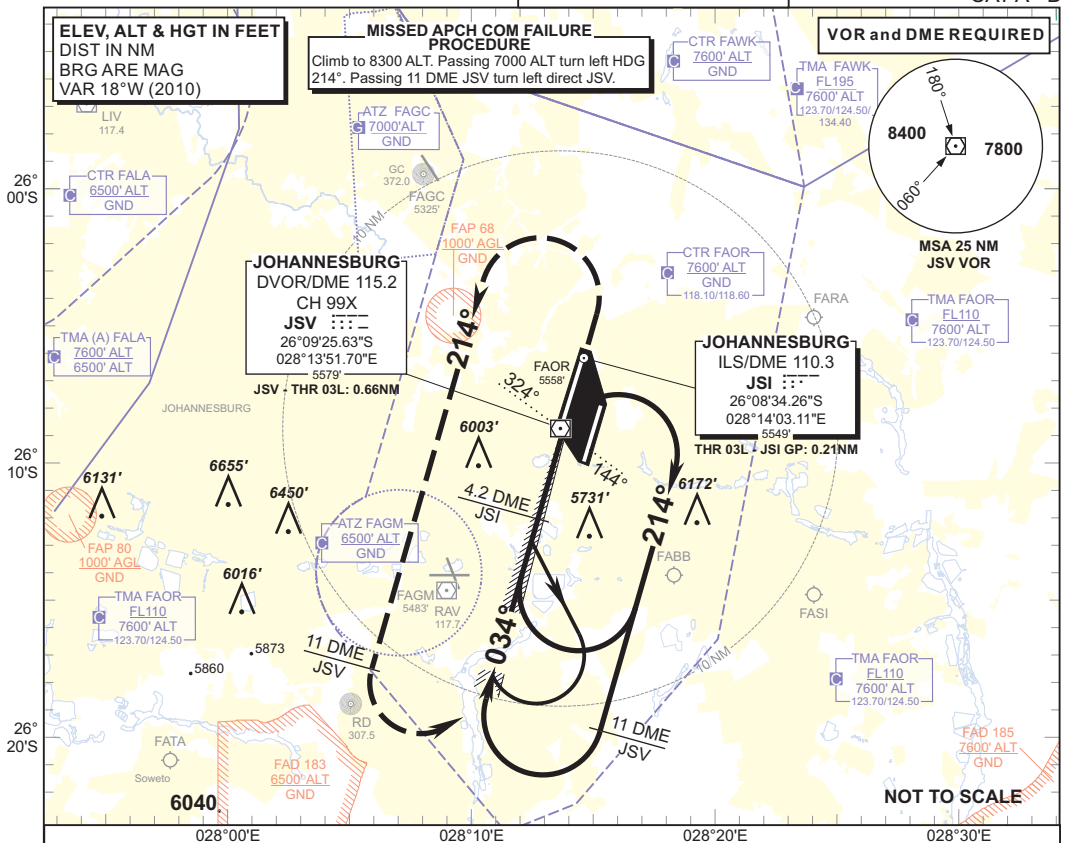


**INSTRUMENT APPROACH CHART** **AERODROME ELEV 5558'**  
 HEIGHTS RELATED TO **THR RWY 03L - ELEV 5558'**

RADAR APP S 124.50  
 E 124.50  
 W 123.70  
 TWR E 118.60  
 W 118.10

ATIS 126.20  
 115.20  
 SMC 121.90

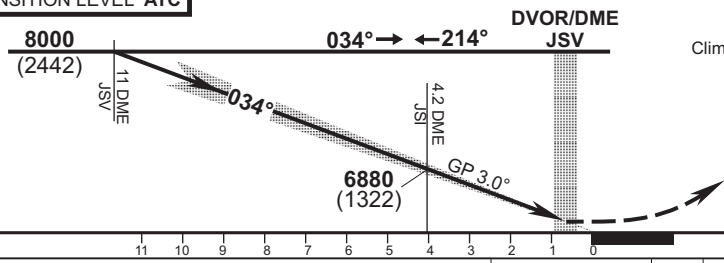
**JOHANNESBURG**  
 (O.R. TAMBO INTERNATIONAL)  
**ILS Z RWY 03L**  
 CAT A - D



<b>JSI DME</b>	4	3	2	1		
<b>ADVISORY ALT (HGT)</b>	6820 (1262)	6500 (942)	6190 (632)	5870 (312)		

**TRANSITION ALT 8000**  
**TRANSITION LEVEL ATC**

**INA ALT: 8000 or higher MSA**



**MISSED APPROACH:**  
 Climb to 8300 ALT. Maintain RWY track. Passing 7000 ALT, turn left HDG 214°. Passing 11 DME JSV turn left direct to JSV.

**ILS RDH 54**

**THR ELEV 5558**

NM to/from **THR RWY 03L**

OCA (H)	A	B	C	D	GS	KT	80	100	120	140	160	
							M:S	2:59	2:24	2:00	1:43	1:30
Straight-in Approach	CAT I	5758 (200)	5758 (200)	5758 (200)	5758 (200)	Rate of descent	FPM	425	531	637	743	849
	CAT II	5658 (100)	5658 (100)	5658 (100)	5658 (100)							
Circling	WEST OF RWY 03/21	6070 (512)		6410 (852)								
	EAST OF RWY 03/21	6050 (492)		6250 (692)								

**NOTE:**  
 1. Procedure Turn Approach applicable only within 30° of the OUBD HDG.  
 2. Use phraseology "Request Procedure Turn Approach".  
 3. CAT II operations and minima must be approved by the SACAA.  
 4. DME JSI (110.3 MHz) co-located with Glide Path transmitter.

Location Indicator FAOR / CHANGE: NDB JBUN & JA decommissioned